

0.6" Ø L.R. GRADE 270 STRANDS

AREA (SQUARE INCHES)	ULTIMATE STRENGTH (LBS. PER STRAND)	APPLIED PRESTRESS (LBS. PER STRAND)
0.217	58,600	43,950

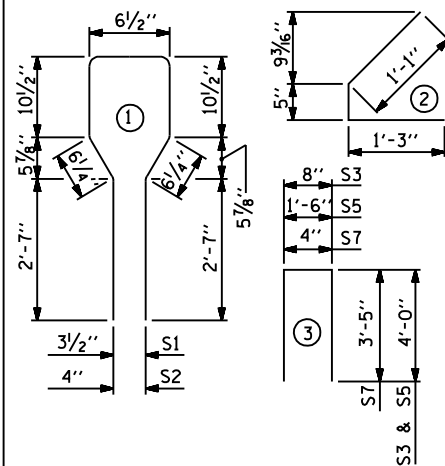
REINFORCING STEEL FOR ONE GIRDER

BAR	NUMBER	SIZE	TYPE	LENGTH	WEIGHT
EXTERIOR GDR. S1		#4	1	8'-6"	
INTERIOR GDR. S1		#4	1	8'-6"	
S2	12	#6	1	8'-6"	153
S3	4	#4	3	8'-8"	23
S4	56	#4	2	2'-9"	103
S5	1	#4	3	9'-6"	6
*S6	4	#5	STR	3'-8"	15
EXTERIOR GDR. S7		#5	3	7'-2"	
INTERIOR GDR. S7		#5	3	7'-2"	
EXTERIOR GDR. S8		#4	STR	7'-0"	
INTERIOR GDR. S		#4	STR		

* NOTE: S6 BARS SHALL BE BENT BEFORE SHIPMENT. HEAT BENDING SHALL NOT BE ALLOWED.

BAR TYPES

ALL BAR DIMENSIONS ARE OUT-TO-OUT



QUANTITIES FOR ONE GIRDER

	REINFORCING STEEL	PSI CONCRETE	0.6" Ø L.R. STRANDS
	LB.	C.Y.	No.
EXTERIOR GIRDER			
INTERIOR GIRDER			

GIRDERS REQUIRED

NUMBER	LENGTH	TOTAL LENGTH

PROJECT NO. _____

COUNTY _____

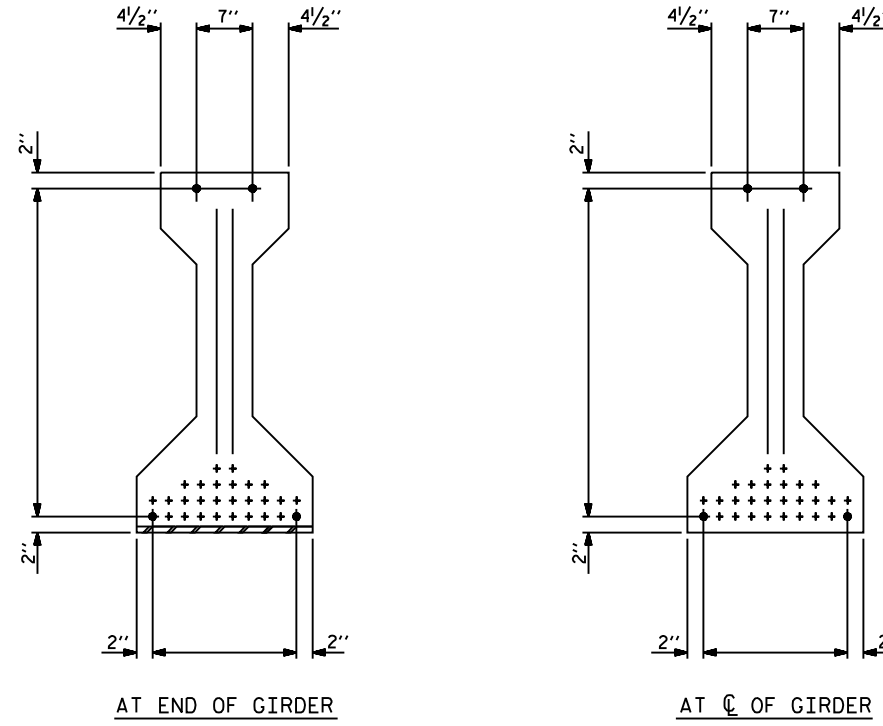
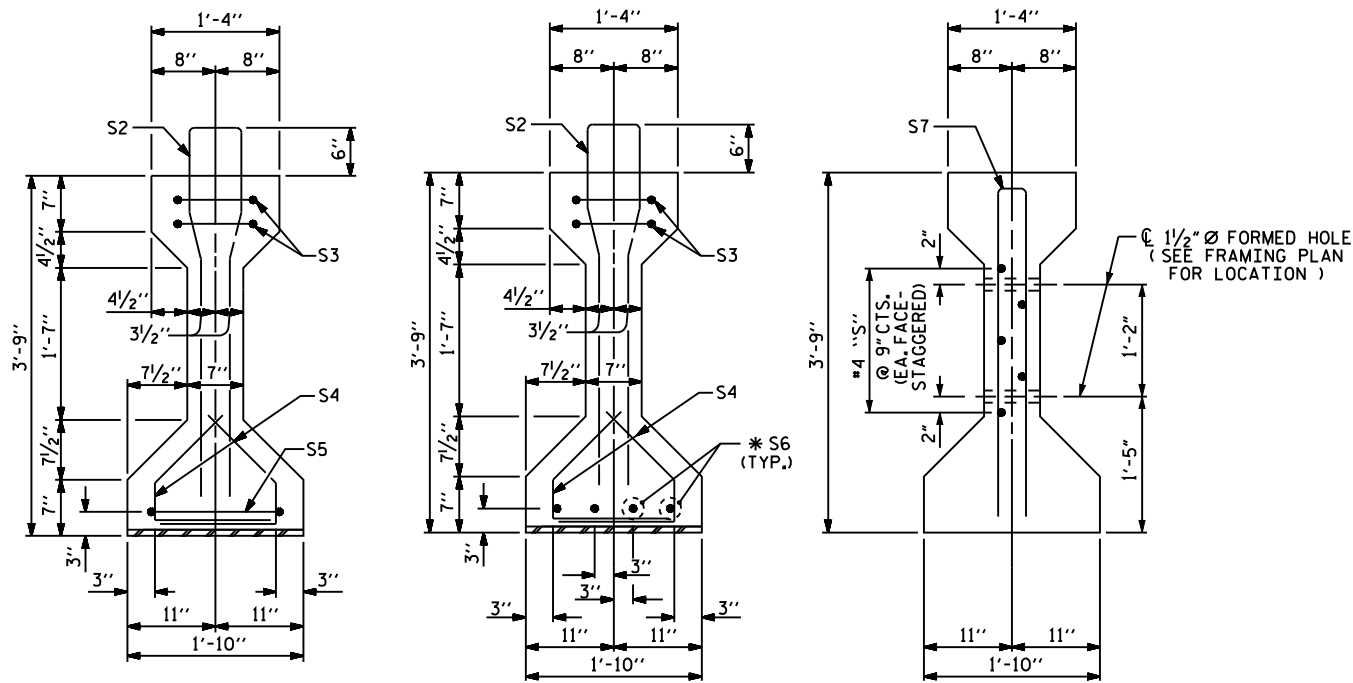
STATION: _____

STATE OF NORTH CAROLINA
DEPARTMENT OF TRANSPORTATION
RALEIGH

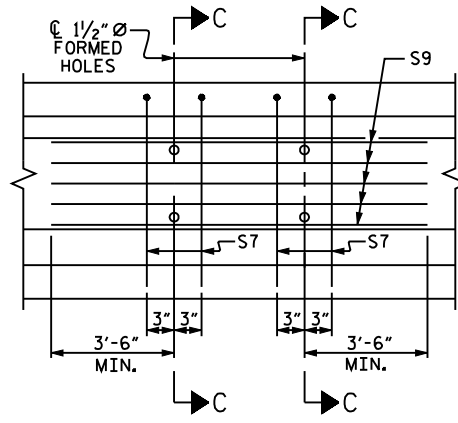
STANDARD
AASHTO TYPE III
PRESTRESSED CONCRETE GIRDER
CONTINUOUS FOR LIVE LOAD

REVISIONS						SHEET NO.
NO.	BYs	DATEs	NO.	BYs	DATEs	
1			3			TOTAL SHEETS
2			4			

STD. NO. PCC5

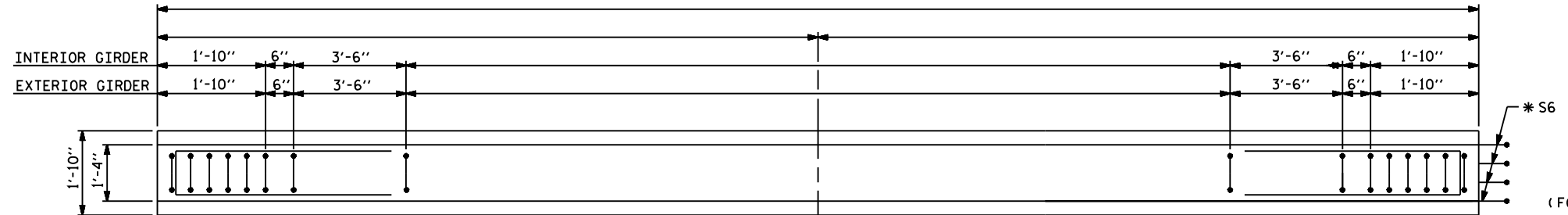


0.6" Ø LOW RELAXATION STRAND LAYOUT

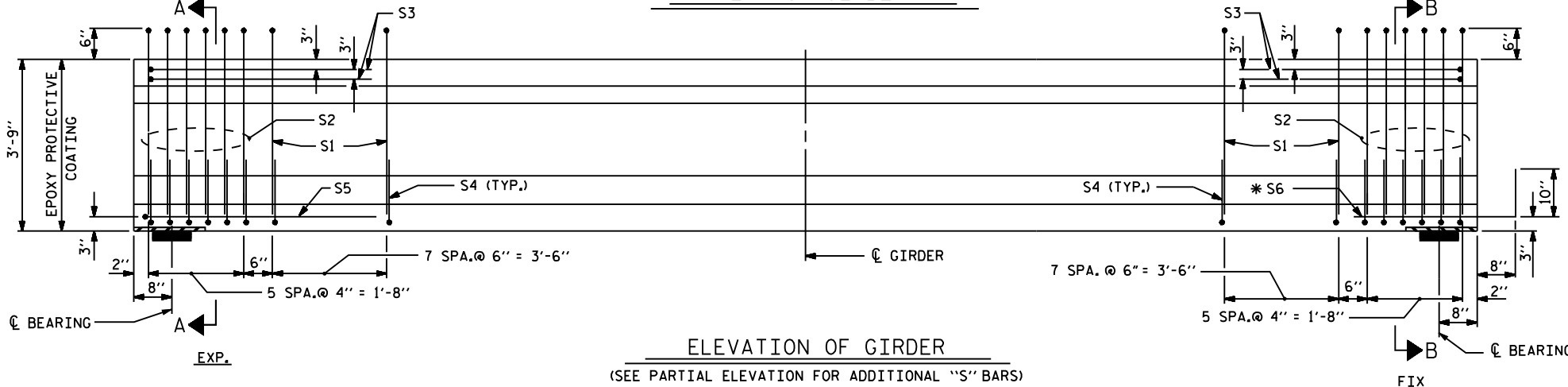


PARTIAL ELEVATION

SHOWING INTERMEDIATE DIAPHRAGM REINFORCING STEEL FOR GIRDER Nos. S9 (FOR INTERIOR GDRS. WITH SKEW < 70° OR SKEW > 110°)

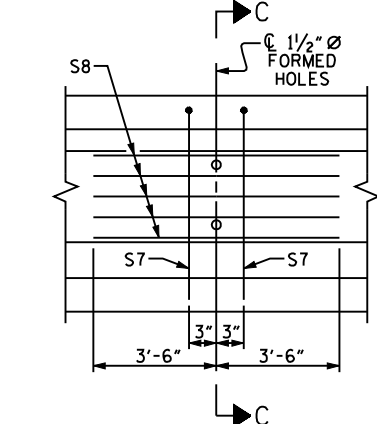


PLAN OF GIRDER



ELEVATION OF GIRDER

(SEE PARTIAL ELEVATION FOR ADDITIONAL "S" BARS)



PARTIAL ELEVATION

SHOWING INTERMEDIATE DIAPHRAGM REINFORCING STEEL FOR GIRDER Nos. S8 (FOR ALL EXTERIOR GIRDERS AND INTERIOR GIRDERS WITH 70° < SKEW < 110°)

ASSEMBLED BY :	DATE :
CHECKED BY :	DATE :
DRAWN BY : ELR 8/91	REV. 7/17/98 RWW/LES
CHECKED BY : GRP 8/91	REV. 10/17/00R RWW/LES
	REV. 5/1/06R TLA/GM